

Data Sheet Control Panel Trunking F2000 halogen-free

Tested and certificated according to: VDE 0604 2-3 EN 50085-2-3
UL and DNV-GL

stand: 09.2024

The control panel trunking F2000 halogen-free is manufactured with extrusion method and made of a blend of polycarbonate an ABS. It is then punched.

Properties:

Material: PC/ ABS blend, free of halogen, silicon and cadmium (RoHS conform)

Operation temperature: -25°C...+90°C

Processing temperature: >0°C

Fire behaviour:	hard to inflame	DIN 4102	Level B1
	self-extinguishing	UL94	V0
	flammability class	DIN 5510-2	S4
	flammability class	NF F 16-101	M1
	smoke emission classification	DIN 5510-2	SR2
	smoke emission	EN ISO 5656-2	D _{s/max} = 40 (HL3)
	drop-ability class	DIN 5510-2	ST2
	flue gas density and toxicity	NF F 16-101	F2
	toxicity	NF X 70-100	CIT = 0,09 (HL3)
	oxygen index	ISO 4589-2	30,6% (HL2)
	fire load		5,2 kWh/kg

Classification according to DIN EN 45545-2 (R22/R23) by total Hazard Level 2 (HL2)

Dielectric strength: >30kV/mm

UV-resistance: PC/ ABS blend is partly UV-resistant, colour changes in case of UV-exposure cannot be excluded

Colour: RAL 7035 grey

Delivery lengths: 2.000 mm incl. cover

Specific Features:

- cover contour 90°
- cable hold- back noses from installation height 60 mm onwards
- slid width 5,5 mm; slot width 4,5 mm
- notch points at the slids
- perforated base according to DIN 50085-2-3, identical punch picture for each length
- 3- lane perforated base from width 80 mm upwards
- for accessories and further information please visit our homepage www.licatec.de



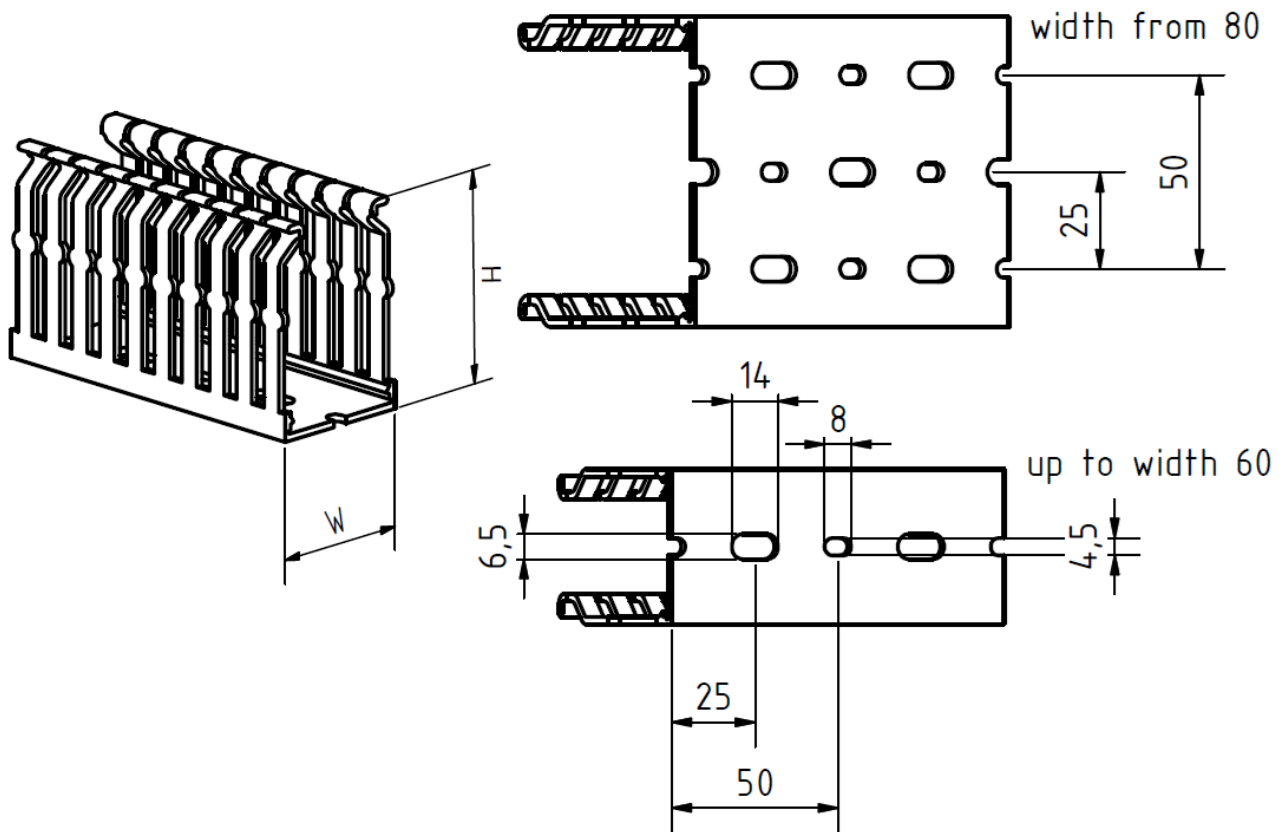
Data Sheet Control Panel Trunking F2000 halogen-free

Tested and certificated according to: VDE 0604 2-3 EN 50085-2-3
UL and DNV-GL

stand: 09.2024

Dimensions:

F2000- HF	Height (H) in mm	Width (W) in mm						
		25	30	40	60	80	100	120
	30	7358-1						
	40	7359-1	7361-1 7362-1					
	60	7369-1	7371-1 7372-1 7373-1					
	80	7379-1	7381-1	7382-1	7383-1	7384-1	7385-1	
	100	7390-1	7393-1	7391-1	7394-1	7392-1		



Control Panel Trunking F2000 halogen-free

